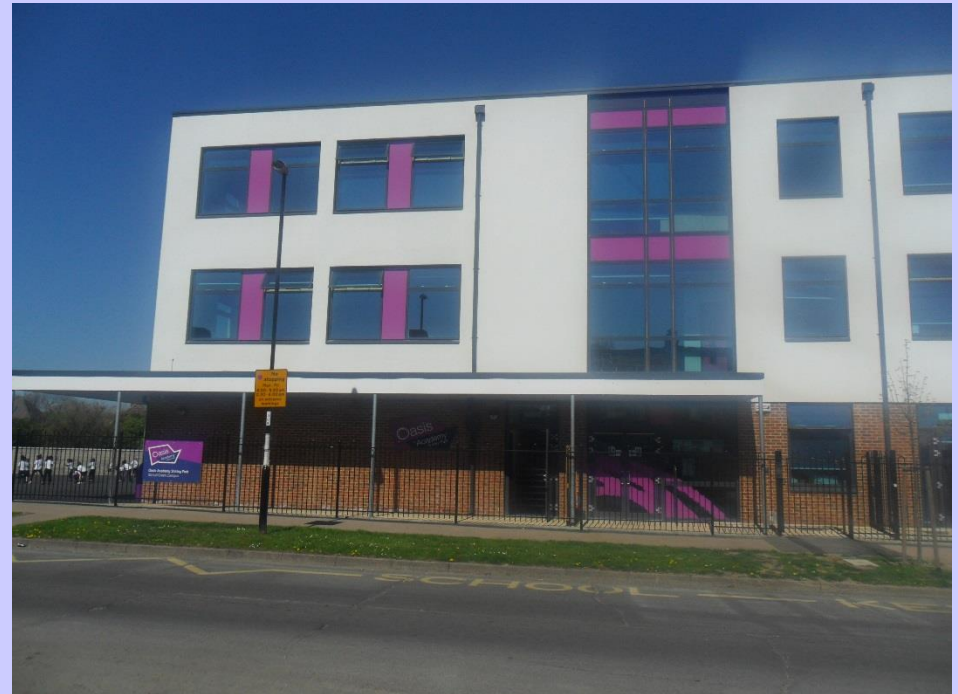


Welcome to Reception



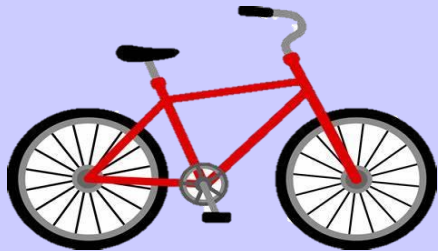
**We are so excited for you to join our
school.**

**Your new Reception classroom is at
our Lower School.**



Coming to School

Gates open at 8:35am and we cannot wait to see you each morning. There will be a friendly face on the gate that you can say hello to as you enter the building. Each classroom has its own special door so that you can come straight in from outside.



Lots of children walk or ride their scooter to school.
How will you be travelling to school?

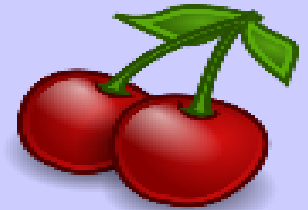


Reception Classes

We have three Reception classes, and they are all named after trees. Can you guess the name of the classes from the pictures below?

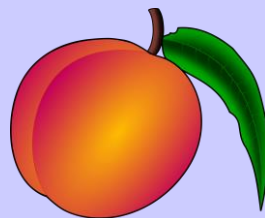


Apple Class



Cherry Class

What class are you going to be in?



Peach Class



My Teachers



Apple Class Teacher
Mrs Vincent

“My favourite colour is purple and I like penguins and monkeys. What is your favourite animal?”



EYFS Lead
Miss Charles

“I love all things cherry! Cherry pie, cherry trees and cherry cake. I also love singing and dancing. What is your favourite song?”



Cherry Class Teacher
Mrs McCarthy

I love nature and enjoy spending time in the garden and going on lovely walks with my family. I have a tabby cat called Olive who loves to nap on my lap. What is your favourite animal?

Peach Class Teacher
Mrs Abbott

“I like to spend time at the beach with my family and eat fish and chips. I have four cats; do you have any pets?”



Other Adults in Early Years



Mrs O'Keefe



Miss Mawford



Ms Lawerance



Mrs Cave

My Classroom

Your classroom is full of wonderful things for you to see and do.



There is a small world area.



There is a role play area.



There is a writing area.



There is a construction area



There is an art area.

My Outdoor Learning Space



There is an obstacle course and a climbing frame.

**You get to learn inside and outside.
This is your wonderful outdoor space**



You can draw and paint outside.



There is a growing area



There is a sandpit

Starting School can be very exciting, but you may have a few questions...



What will happen if I get hungry or need a drink?

We always have water for you to drink. Your grown up can order you milk to have at school. Every day we have fruit to eat.



What will happen if I need the toilet?

You have toilets in your classroom and an adult is always there to help you.



Will I make friends?

Yes! We will make sure that we support you with the skills to make friends and develop your relationships with your peers. We learn and practice our Oasis habits at school to ensure we are always showing kindness.



What will happen at Lunchtime?

You will have lunch at school. You can have a school dinner or bring your own lunch in a lunch box.

**



What will I wear to school?



At Oasis we are very proud of our school uniform, and we know you will be too!



What will I wear when I am playing outside?



When you play outside it is important you have the correct clothing to keep you safe and warm. Please bring your hat, coat and wellies during the colder months.



What happens at Home Time?



The same door that you use to come into your classroom is the same door that your grown ups can pick you up from at the end of the day.

We cannot wait for you to join us in September.

If you have any more questions get your grown up to email us at

info@oasisshirleyparkprimary.org **FAO:**

Ms Charles.

